

MDS-E10/E10/1

SONY®

SERVICE MANUAL

J Model

MDS-E10

US Model

Canadian Model

AEP Model

E Model

MDS-E10/E10/1

追加 -1

先に発行したサービスマニュアルと共にご使用ください。

SUPPLEMENT-1

File this supplement with the Service Manual.

- SCMS 選択ジャンパー設定 (GC, UC)
- モータドライバ IC 交換上の注意 (J, GC, UC)
- J, /1GC, /1UC 補修部品追加 (J, /1GC, /1UC)
- **SCMS select jumper setting (GC, UC)**
- **Note when replacing the motor driver IC (J, GC, UC)**
- **Addition of repair parts for J, /1GC, /1UC (J, /1GC, /1UC)**

[ご注意]

- MDS-E10/1 (GC), /1 (UC) 仕向けからSCMSが解除されております。
また、MDS-E10 (GC), (UC) のメインマウントを/1仕向けのメインマウントでサービスを行う場合は、SERVICE NOTEの1項の記載事項に注意し、シリアルNo.を確認の上SERVICE NOTEにしたがって修理してください。
- MDS-E10 (GC), (UC) 仕向けのメインマウントは、SCMS設定とモータドライバ ICの差異がありますので、SERVICE NOTEの2項を必ず確認してから修理する必要があります。ご注意ください。
また、/1仕向けから一部部品変更等を行っている部分がありますので、旧仕向けのマウント修理の際には、補修部品表をよく確かめてから修理を行ってください。

[Notes]

- SCMS is removed from the destinations of MDS-E10/1 (GC), /1 (UC).
When making service of the Main Mount of the MDS-E10 (GC), (UC) on top of the Main Mount for the destination of /1 destinations, pay attention on the description of the SERVICE NOTE item 1 and make the repair work in accordance with the SERVICE NOTE after checking the serial number.
- The Main Mount of the MDS-E10 for the destinations of (GC), (UC) is different in the SCMS setting and uses the different motor driver IC. Be sure to check the SERVICE NOTE item 2 before starting the repair work.
Some parts are changed in the MDS-E10 for the destination of /1. When repairing the mounted boards for former destinations, check the repair parts lists before starting the repair work.

SECTION 1 SERVICE NOTE

1. 下記シリアルNo.のセットには2種類のSCMS選択ジャンパーが設定されていますので、サービスを行う時にはそれぞれ新基板の選択ジャンパーを下記の表の設定に修正します。

該当シリアル

GC1 : #700001 ~ 702210まで

UC2 : #300001 ~ 301630まで

1. The following two types of SCMS selector jumper are set in the equipment of the serial numbers shown below. When performing repair service, set the SCMS selector jumpers of the new board as shown in the table below.

Applicable serial numbers

GC1 : No. 700001 to 702210

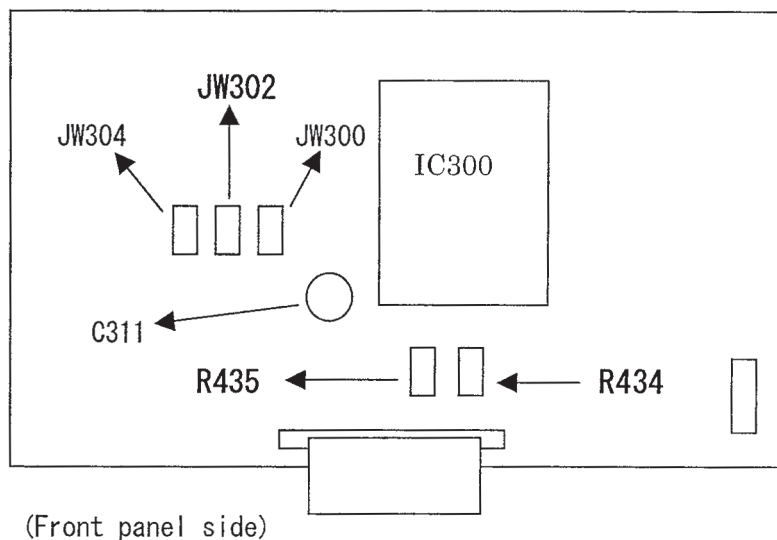
UC2 : No. 300001 to 301630

SCMS選択JW設定表

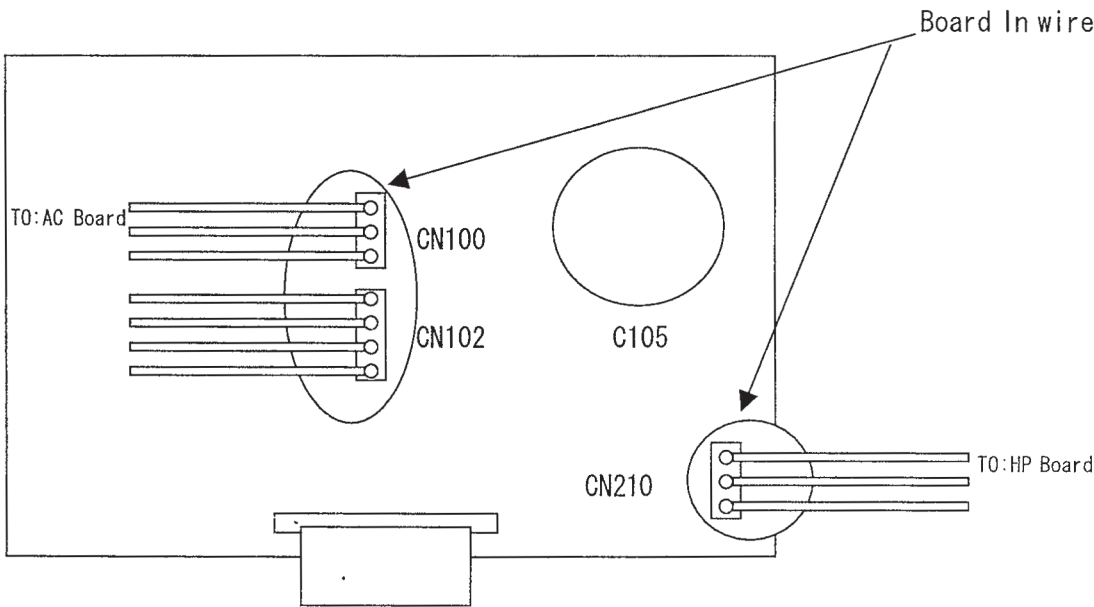
	SCMS Free
JW302	マウント無し
R434	0 Ωチップ抵抗
R435	マウント無し

SCMS selector jumper setup table

	SCMS Free
JW302	Not mount
R434	0 ohm chip resistor
R435	Not mount



2. サービス基板を使用して旧セットをサービスする際にサービス基板にはCN100, 102, 210部にはすでにボードインワイヤーがマウントされていますので、旧セットで使用していたワイヤーは不要になります。
このサービス基板のワイヤーは旧セットセットに接続されているワイヤーと配線はコンパチです。



3. IC104 (モータドライバIC) 交換について。(注意)
旧基板ではIC104には三洋製モータドライバLB1641 (8-759-822-09) が使用されています。
このIC104が故障した時、IC単体を交換される場合にはメイン基板の部品番号をよく注意して確認し、サービスガイド上の部品表の指示どおりの部品を使用して下さい。

末尾	メーカ名	型番	部品番号
-11, -12	三洋製	(LB1641)	: 8-759-822-09
-13	ローム製	(BA6209)	: 8-759-913-06

2. When you are going to repair the former equipment using the new board that is supplied as repair part, the board-in-wires are already mounted to CN100, CN102 and CN210 of the service board. It means that the board-in-wires that have been used in the former board become unnecessary.
* The board-in-wires of the service board are compatible with the wires used in the former board.

3. When replacing IC104 (motor driver IC)
The motor driver LB164 (8-759-822-09) made by Sanyo was used in the former board.
If IC104 becomes defective and you are going to replace IC104 as a single part, watch the suffix number of the part code number of the MAIN board and select IC104 that is specified by the part list of Service Manual.

Suffix	Maker name	Model No.	Part No.
-11, -12	Made by Sanyo	(LB1641)	: 8-759-822-09
-13	Made by Rohm	(BA6209)	: 8-759-913-06

プリント図、回路図用共通ノート

- 行き先のページ表示は、MDS-E10 のサービスマニュアルのページ数です。

回路図ノート

- ケミコン、タンタルを除くコンデンサで、耐圧 50V 以下のものは、その耐圧を省略。単位はすべて μF (p は pF)。
- 抵抗で指示のないものは、1 / 4W 以下を示す。単位はすべて。
- ：内蔵部品
- ：パネル表示名称。
- +B : B + ライン。
- B : B - ライン。

△印の部品、または△印付の点線で囲まれた部品は、安全性を維持するために、重要な部品です。
従って交換時は、必ず指定の部品を使用して下さい。

- ：調整名称。
- 電圧および波形は、対アース間を無信号状態で測定。
無印 : 停止
() : テストディスク (TDYS-1) を再生
* : 測定不可能点
- 電圧値は、テスタ (入力インピーダンス 10M / V) で測定した参考値。
- 波形図は、オシロスコープで測定した参考図。
- 番号は波形図の照合番号。
- 信号の流れについて
Σ : 再生
Σ : 録音
Σ> : 再生 (デジタル出力)
Σ> : 録音 (デジタル入力)

プリント図ノート

- : 部品面側取付のリード線。
- : は見ている側のパターン
(他のパターンについては表示されません)

THIS NOTE IS COMMON FOR WIRING BOARDS
AND SCHEMATIC DIAGRAMS

- Abbreviation
GC : MDS-E10 : AEP, E
UC : MDS-E10 : US, Canadian
1GC : MDS-E10/1 : AEP, E
1UC : MDS-E10/1 : US, Canadian
- A page display of a destination is the number of pages of MDS-E10 service manual.

For schematic diagrams

- All capacitors are in μF unless otherwise noted. pF : $\mu\mu F$. 50V or less are not indicated except for electrolytics and tantalums.
- All resistors except chips are in Ω and $1/4W$ or less unless otherwise specified.
- △ : internal component.
- ：panel designation
- +B : B+ Line
- B : B- Line

Note: The components identified by mark △ or dotted line with mark △ are critical for safety. Replace only with part number specified.	Note: Les composants identifiés par une marque △ sont critiques pour la sécurité. Ne les remplacer que par une pièce portant le numéro spécifié.
---	---

- ：adjustment for repair.
- Voltage and waveforms are dc with respect to ground under no-signal (detuned) conditions.
- no mark : STOP
- () : Play the test disc (TDYS-1).
- * : can not be measured.
- Voltag es are taken with a VOM (Input impedance 10 M Ω). Voltage variations may be noted due to normal production tolerances.
- Waveforms are taken with a oscilloscope. Voltage variations may be noted due to normal production tolerances.
- Circled numbers refer to waveforms.
- Signal path.
Σ : PB
Σ : REC
Σ> : PB (Digital out)
Σ> : REC (Digital in)

For printed wiring boards

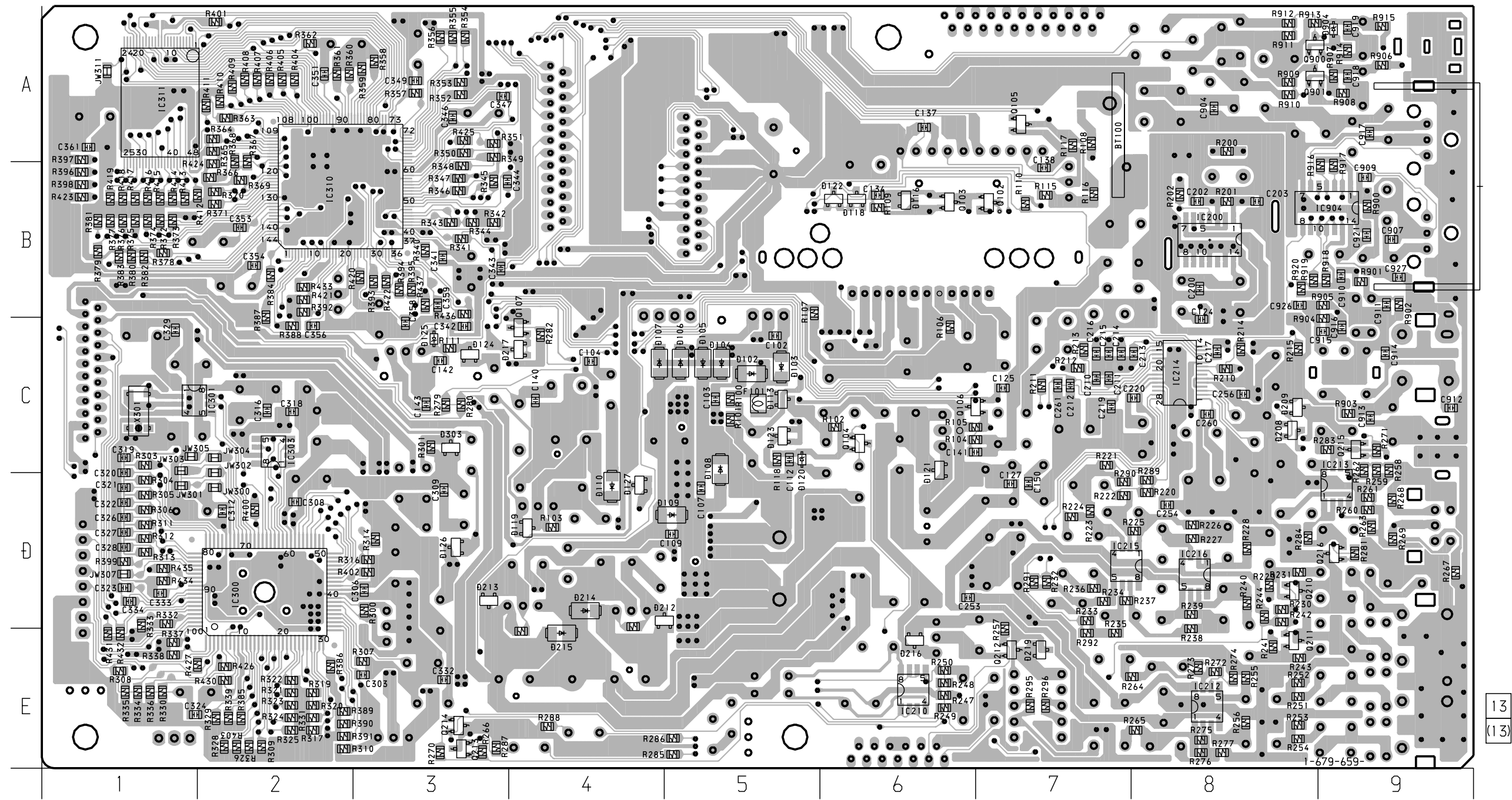
- : parts extracted from the component side.
- : Pattern on the side which is seen.
(Other patterns are not shown.)

2-1. PRINTED WIRING BOARD – MAIN SECTION –

- Refer to page 4 for Note on Printed Wiring Boards on this manual.
- Refer to page 59 for Circuit Board Location.

There are a few cases that the part printed on this diagram isn't mounted in this model.

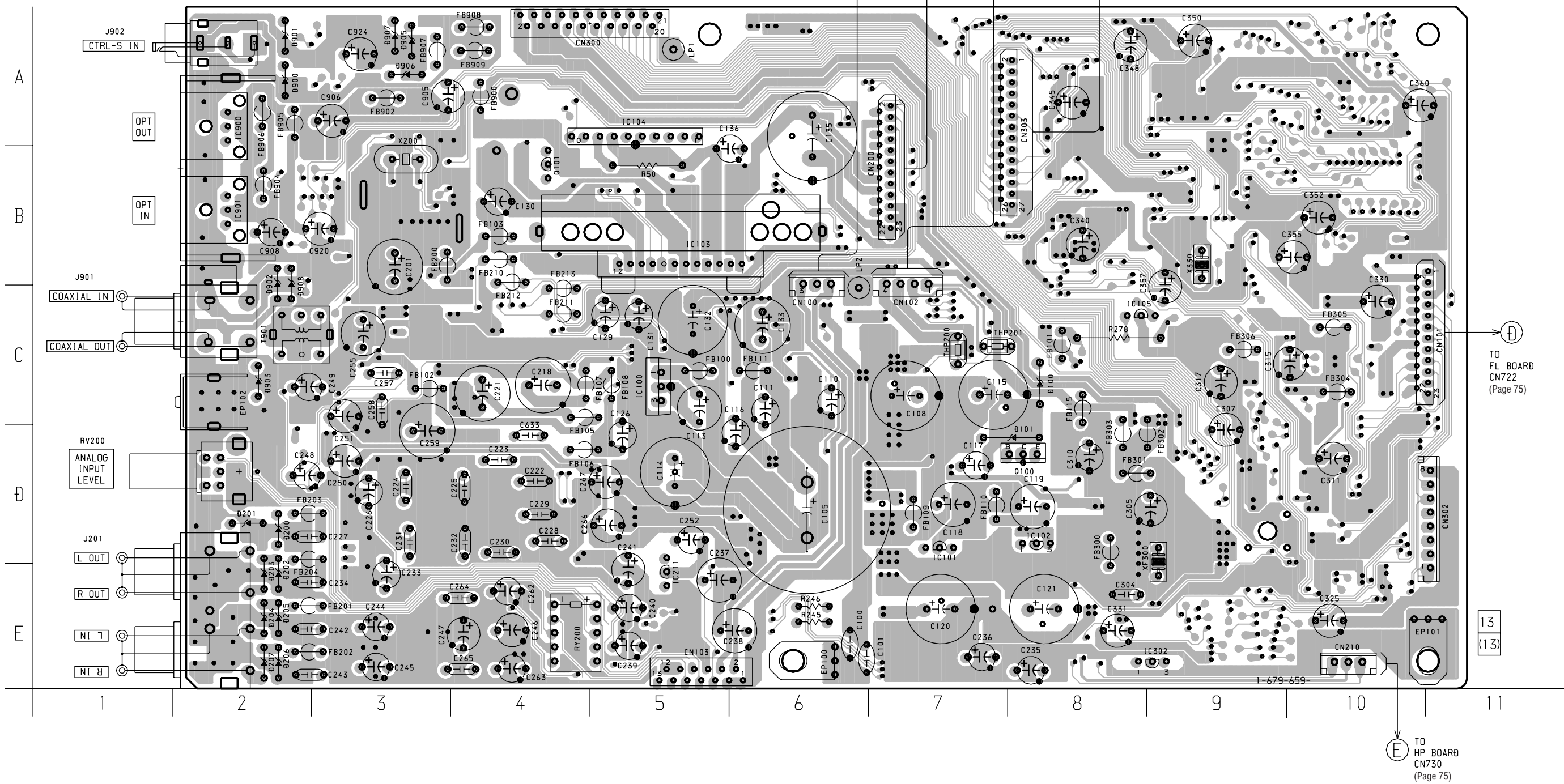
【MAIN BOARD】(CONPONENT SIDE)



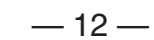
• Semiconductor Location

Ref. No.	Location	Ref. No.	Location	Ref. No.	Location	Ref. No.	Location	Ref. No.	Location
D102	C-5	D120	C-5	D215	E-4	IC303	C-2	Q213	E-3
D103	C-5	D121	D-6	D217	C-4	IC310	B-2	Q214	E-3
D104	C-5	D122	B-6	D303	C-3	IC311	A-1	Q215	C-9
D105	C-5	D123	C-5	D904	A-9			Q216	D-9
D106	C-5	D124	C-3			Q102	B-7	Q900	A-9
D107	C-4	D125	C-3	IC200	B-8	Q103	B-6	Q901	A-9
D108	C-5	D126	D-3	IC210	E-6	Q104	C-6		
D109	D-5	D127	D-4	IC212	F-8	Q105	A-7		
D110	D-4	D208	C-8	IC213	D-9	Q106	C-7		
D113	C-5	D209	C-8	IC214	C-8	Q107	C-4		
D116	B-6	D212	D-5	IC215	D-7	Q210	D-8		
D118	B-6	D213	D-3	IC216	D-8	Q211	E-8		
D119	D-4	D214	D-4	IC300	D-2	Q212	E-7		

【MAIN BOARD】(SOLDER SIDE)

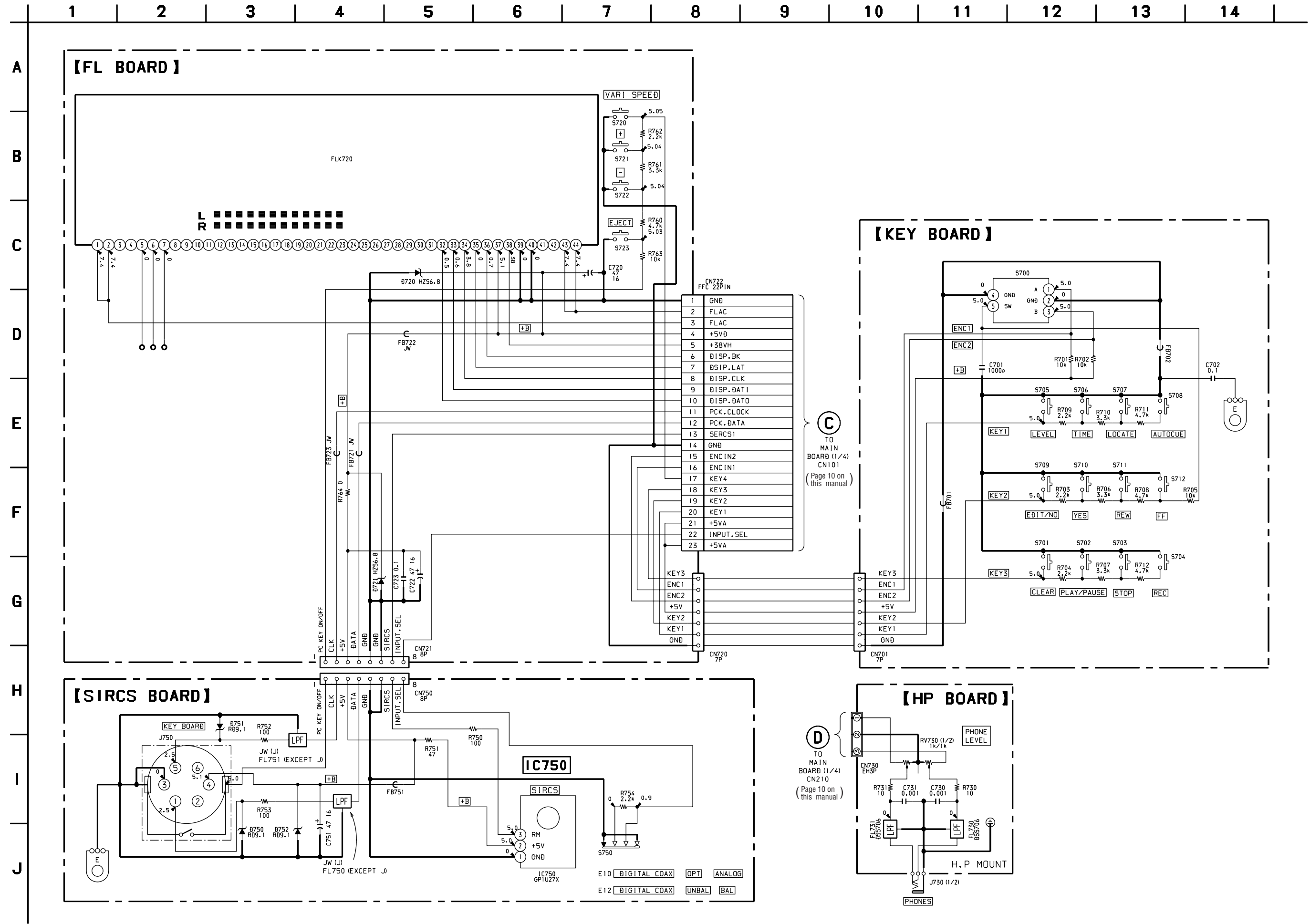


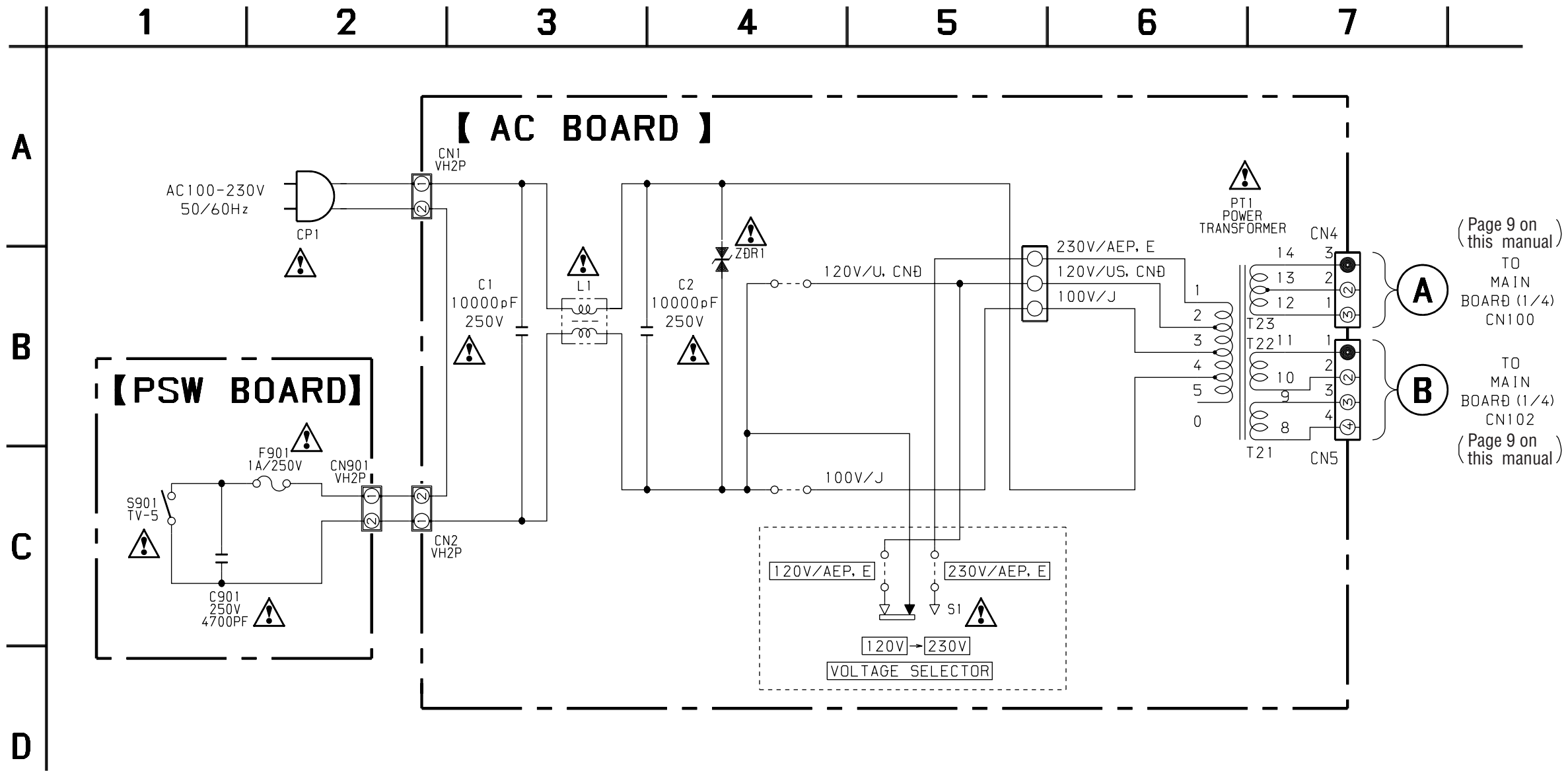






2-5. SCHEMATIC DIAGRAM – FL SECTION – • Refer to page 4 for Note on Schematic Diagrams on this manual.





SECTION 3 EXPLODED VIEWS

【使用上の注意】

- -XX, -Xは標準化部品のため、セットについている部品と異なる場合があります。
- *印の部品は常時在庫しておりません。

- 分解図中の機構部品で、図面番号のない部品は供給しません。
- ねじ一覧表と付属梱包部は、部品表の最後にあります。

△印の部品、または△印付の点線で囲まれた部品は、安全性を維持するために、重要な部品です。
従って交換時は、必ず指定の部品を使用して下さい。

Note:

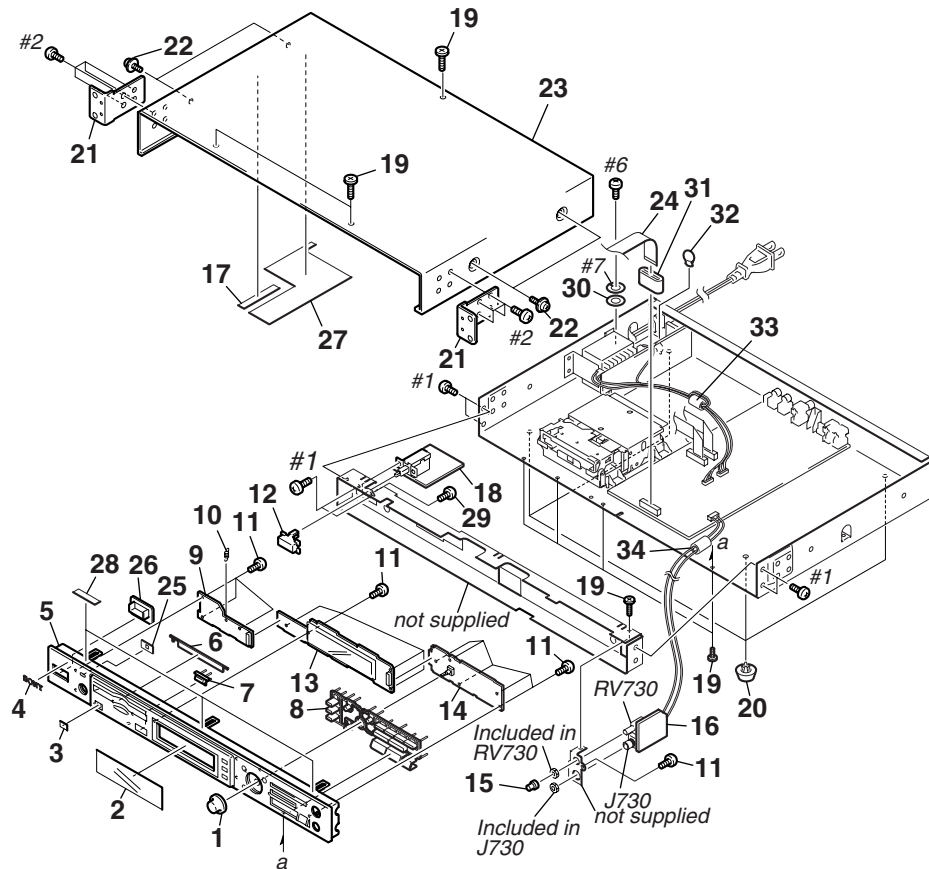
- -XX, -X mean standardized parts, so they may have some differences from the original one.
- Items marked “*” are not stocked since they are seldom required for routine service. Some delay should be anticipated when ordering these items.
- The mechanical parts with no reference number in the exploded views are not supplied.

- Hardware (# mark) list and accessories and packing materials are given in the last of this parts list.
- Abbreviation
GC : MDS-E10 : AEP, E
UC : MDS-E10 : US, Canadian
1GC : MDS-E10/1 : AEP, E
1UC : MDS-E10/1 : US, Canadian

The components identified by mark △ or dotted line with mark △ are critical for safety. Replace only with part number specified.

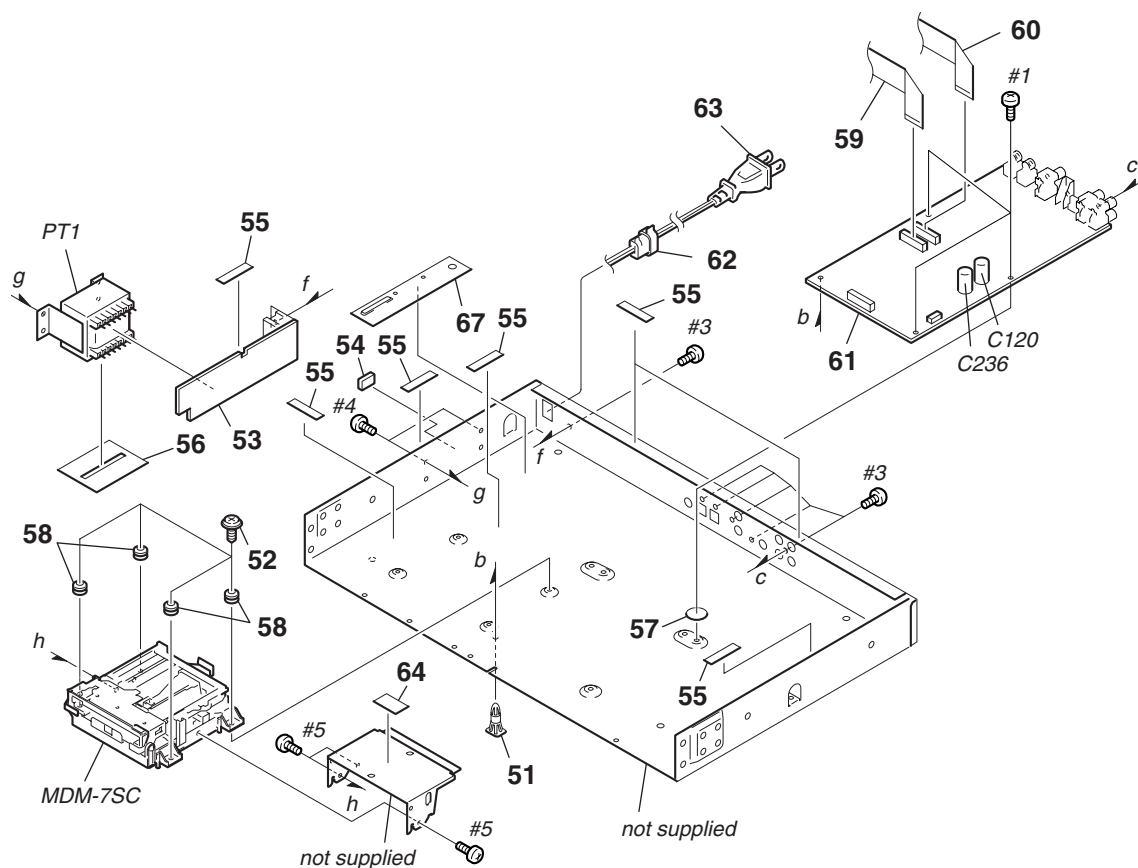
Les composants identifiés par une marque △ sont critiques pour la sécurité. Ne les remplacer que par une pièce portant le numéro spécifié.

3-1. FRONT SECTION



Ref. No.	Part No.	Description	Remarks	Ref. No.	Part No.	Description	Remarks
1	4-983-657-01	KNOB (AMS)		* 18	A-4591-309-A	PSW BOARD, COMPLETE	
2	2-347-248-12	WINDOW (FL)		19	2-338-688-01	SCREW, STEP TAPPING	
3	2-347-020-01	WINDOW (RC)		20	3-670-155-11	LEG	
4	4-942-568-41	EMBLEM (NO.5), SONY		* 21	2-347-054-11	BRACKET, RACK MOUNT	
5	2-347-240-11	PANEL, FRONT		22	3-704-366-01	SCREW (CASE) (M3X8)	
6	2-347-247-01	LID (MD)		23	2-347-234-01	CASE	
7	2-346-662-01	BUTTON (E)		24	1-757-252-11	WIRE, FLAT TYPE (23 CORE)	
8	2-347-246-01	BUTTON (MD)		25	2-347-251-01	SHEET (S-SW), BLIND	
* 9	A-4591-311-A	SIRCS BOARD, COMPLETE (J)		26	2-346-775-01	ESCUTCHEON	
* 9	A-4591-359-A	SIRCS BOARD, COMPLETE (EXCEPT J)		* 27	2-347-268-02	INSULATED PLATE (B)	
10	4-228-630-11	SPRING (LID), TENSION COIL		28	3-831-441-11	CUSHION (F)	
11	4-951-620-01	SCREW (2.6X8), +BVTP		29	4-951-620-31	SCREW (2.6), +BVTP	
12	2-335-924-31	BUTTON		30	3-663-748-01	WASHER, SUS (UC)	
* 13	A-4591-313-A	FL BOARD, COMPLETE		31	1-500-422-11	BEAD, FERRITE (UC, 1UC, 1GC)	
* 14	A-4591-312-A	KEY BOARD, COMPLETE		32	4-374-846-11	COVER, CAPACITOR, CAP TYPE (GC, 1GC)	
15	3-367-431-01	KNOB (BAL)		33	1-543-830-11	CLAMP, SLEEVE FERRITE (EXCEPT J)	
* 16	A-4591-310-A	HP BOARD, COMPLETE		34	1-543-798-11	FILTER, CLAMP (FERRITE CORE)(1UC, 1GC)	
* 17	2-347-385-01	CUSHION					

3-2. REAR SECTION



Ref. No.	Part No.	Description	Remarks
* 51	2-338-741-01	HOLDER, PWB	
52	2-347-239-01	SCREW (+BV WH M3), STEP	
* 53	A-4591-307-A	AC BOARD, COMPLETE (J)	
* 53	A-4591-308-A	AC BOARD, COMPLETE (GC, 1GC)	
* 53	A-4591-358-A	AC BOARD, COMPLETE (UC)	
* 53	A-4591-389-A	AC BOARD, COMPLETE (1UC)	
54	4-910-502-01	CUSHION, ANTENNA	
55	3-831-441-11	CUSHION (F)	
* 56	2-347-384-01	INSULATED PLATE (D)	
* 57	3-564-027-01	FELT, LIMITER	
58	2-347-252-01	INSULATOR	
59	1-757-254-12	WIRE, FLAT TYPE (27 CORE)	
60	1-757-253-12	WIRE, FLAT TYPE (23 CORE)	
* 61	A-4591-321-A	MAIN BOARD, COMPLETE (J)	
* 61	A-4591-390-A	MAIN BOARD, COMPLETE (EXCEPT J)	
62	3-703-244-00	BUSHING (2104), CORD (EXCEPT 1UC)	
62	4-916-783-01	BUSHING, CORD (1UC)	

Ref. No.	Part No.	Description	Remarks
△ 63	1-751-275-11	CORD, POWER (GC, 1GC)	
△ 63	1-783-531-41	CORD, POWER (UC)	
△ 63	1-790-345-21	CORD, POWER (J)	
△ 63	1-792-149-12	CORD, POWER (1UC)	
* 64	3-703-044-26	LABEL, CAUTION (UC, 1UC)	
* 67	2-347-382-02	INSULATED PLATE (C)	
△ PT1	1-435-758-11	TRANSFORMER, POWER (EXCEPT 1GC))	
△ PT1	1-435-758-21	TRANSFORMER, POWER (1GC)	
MDM-7SC	A-4677-420-A	DEVICE MINI DISC MDM-7SC	

△印の部品 ,または △印付きの点線で囲まれた部品は ,
安全性を維持するために重要な部品です。
従って交換時は ,必ず指定の部品を使用して下さい。

The components identified by
mark △ or dotted line with mark
△ are critical for safety.
Replace only with part number
specified.

Les composants identifiés par
une marque △ sont critiques
pour la sécurité.
Ne les remplacer que par une
pièce portant le numéro spécifié.

SECTION 4 ELECTRICAL PARTS LIST

AC

BD

【電気部品表】

【使用上の注意】

- ここに記載されている部品は、補修用部品であるため、回路図及びセットに付いている部品と異なる場合があります。
- XX, -Xは標準化部品のため、セットに付いている部品と異なる場合があります。
- *印の部品は常備在庫していません。
- コンデンサの単位でuFはμFを示します。

- 抵抗の単位は省略してあります。
金 被：金属被膜抵抗。
サンキン：酸化金属被膜抵抗。
- インダクタの単位でuHはμHを示します。
- 半導体の名称でuA..., uPA..., uPB..., uPC..., uPD...等はそれぞれμA..., μPA..., μPB..., μPC..., μPD...を示します。

お願い

図面番号で部品を指定するときは基板名又はブロックを併せて指定してください。

△印の部品、または△印付の点線で囲まれた部品は、安全性を維持するために、重要な部品です。
従って交換時は、必ず指定の部品を使用して下さい。

Note:

When indicating parts by reference number, please include the board name.

The components identified by mark △ or dotted line with mark △ are critical for safety. Replace only with part number specified.

Les composants identifiés par une marque △ sont critiques pour la sécurité. Ne les remplacer que par une pièce portant le numéro spécifié.

- Due to standardization, replacements in the parts list may be different from the parts specified in the diagrams or the components used on the set.

- XX, -X mean standardized parts, so they may have some difference from the original one.
- Items marked "*" are not stocked since they are seldom required for routine service. Some delay should be anticipated when ordering these items.
- CAPACITORS:
uF: μF
- RESISTORS
All resistors are in ohms.
METAL: metal-film resistor
METAL OXIDE: Metal Oxide-film resistor
F: nonflammable

- COILS
uH: μH
- SEMICONDUCTORS
In each case, u: μ, for example:
uA..., uPA..., uPB..., uPC..., uPD..., μPD...
- Abbreviation
GC : MDS-E10 : AEP, E
UC : MDS-E10 : US, Canadian
1GC : MDS-E10/1 : AEP, E
1UC : MDS-E10/1 : US, Canadian

Ref. No.	Part No.	Description	Remarks	Ref. No.	Part No.	Description	Remarks
*	A-4591-307-A	AC BOARD, COMPLETE (J)			A-4725-492-A	BD BOARD, COMPLETE	
*	A-4591-308-A	AC BOARD, COMPLETE (GC, 1GC)			*****		
*	A-4591-358-A	AC BOARD, COMPLETE (UC)			< CAPACITOR >		
*	A-4591-389-A	AC BOARD, COMPLETE (1UC)					

	2-347-238-01	BRACKET (VS)					
		< CAPACITOR >					
C1	1-113-925-11	CERAMIC	0.01uF 20.00% 250V				
C2	1-113-925-11	CERAMIC	0.01uF 20.00% 250V				
		< CONNECTOR >					
CN1	1-564-321-00	PIN, CONNECTOR 2P (1UC)					
* CN1	1-580-230-11	PIN, CONNECTOR (PC BOARD) 2P (UC)					
CN1	1-774-108-11	PIN, CONNECTOR (PC BOARD) (J, GC, 1GC)					
CN2	1-564-321-00	PIN, CONNECTOR 2P (UC)					
CN4	1-564-506-11	PLUG, CONNECTOR 3P					
CN5	1-564-507-11	PLUG, CONNECTOR 4P					
		< COIL >					
△ L1	1-421-915-11	COIL, LINE FILTER					
		< SWITCH >					
△ S1	1-762-753-11	SWITCH, VOLTAGE SELECTION (VOLTAGE SELECTOR)					
△ S901	1-572-267-21	SWITCH, PUSH (AC POWER) (1 KEY) (POWER)					
		< POWER TRANSFORMER >					
△ PT1	1-435-758-11	TRANSFORMER, POWER (EXCEPT 1GC)					
△ PT1	1-435-758-21	TRANSFORMER, POWER (1GC)					
		< VARISTOR >					
△ ZDR1	1-809-267-11	VARISTOR ERZV10D471					

The components identified by mark △ or dotted line with mark △ are critical for safety. Replace only with part number specified.

Les composants identifiés par une marque △ sont critiques pour la sécurité. Ne les remplacer que par une pièce portant le numéro spécifié.

△印の部品、または△印付きの点線で囲まれた部品は、安全性を維持するために重要な部品です。
従って交換時は、必ず指定の部品を使用して下さい。

Ref. No.	Part No.	Description				Remarks	Ref. No.	Part No.	Description				Remarks
C133	1-164-156-11	C133	0.1uF		25V		IC171	8-759-096-87	IC TC7WU04FU(TE12R)				
C141	1-126-206-11	C141	100uF	20%	6.3V		IC181	8-759-481-17	IC MC74ACT08DTR2				
C142	1-164-156-11	C142	0.1uF		25V		IC190	8-759-460-72	IC BA033FP-E2				
C143	1-164-156-11	C143	0.1uF		25V		IC195	8-759-640-41	IC BR24C08F-E2				
C144	1-162-970-11	C144	0.01uF	10%	25V		< JUMPER RESISTOR >						
C145	1-164-156-11	C145	0.1uF		25V								
C151	1-117-370-11	CERAMIC CHIP	10uF		10V		JW201	1-216-295-91	SHORT	0			
C152	1-164-156-11	C152	0.1uF		25V		JW202	1-216-295-91	SHORT	0			
C153	1-164-156-11	C153	0.1uF		25V		JW203	1-216-295-91	SHORT	0			
C154	1-126-206-11	C154	100uF	20%	6.3V		JW903	1-216-295-91	SHORT	0			
							JW904	1-216-295-91	SHORT	0			
C155	1-164-156-11	C155	0.1uF		25V		< COIL >						
C156	1-164-156-11	C156	0.1uF		25V								
C157	1-164-156-11	C157	0.1uF		25V								
C158	1-162-927-11	C158	100PF	5%	50V		L101	1-500-245-11	FERRITE	0uH			
C159	1-162-927-11	C159	100PF	5%	50V		L102	1-500-245-11	FERRITE	0uH			
							L103	1-500-245-11	FERRITE	0uH			
C160	1-162-927-11	C160	100PF	5%	50V		L105	1-414-235-22	FERRITE	0uH			
C161	1-162-970-11	C161	0.01uF	10%	25V		L106	1-500-245-11	FERRITE	0uH			
C162	1-162-970-11	C162	0.01uF	10%	25V								
C163	1-125-891-11	CERAMIC CHIP	0.47uF	10.00%	10V		L121	1-500-245-11	FERRITE	0uH			
C164	1-162-927-11	C164	100PF	5%	50V		L122	1-500-245-11	FERRITE	0uH			
							L131	1-500-245-11	FERRITE	0uH			
C165	1-162-968-11	C165	0.0047uF	10%	50V		L141	1-216-296-11	SHORT	0			
C166	1-125-891-11	CERAMIC CHIP	0.47uF	10.00%	10V		L142	1-216-296-11	SHORT	0			
C167	1-164-245-11	CERAMIC CHIP	0.015uF	10.00%	25V								
C169	1-164-156-11	C169	0.1uF		25V		L143	1-216-296-11	SHORT	0			
C171	1-164-156-11	C171	0.1uF		25V		L144	1-216-296-11	SHORT	0			
							L145	1-216-296-11	SHORT	0			
C172	1-164-156-11	C172	0.1uF		25V		L146	1-469-855-21	FERRITE	0uH			
C180	1-117-370-11	CERAMIC CHIP	10uF		10V		L147	1-469-855-21	FERRITE	0uH			
C181	1-126-206-11	C181	100uF	20%	6.3V								
C182	1-163-038-91	CERAMIC CHIP	0.1uF		25V		L161	1-500-245-11	FERRITE	0uH			
C183	1-164-156-11	C183	0.1uF		25V		L171	1-500-245-11	FERRITE	0uH			
							L180	1-469-855-21	FERRITE	0uH			
C184	1-117-970-11	ELECT CHIP	22uF	20.00%	10V		L181	1-469-855-21	FERRITE	0uH			
C185	1-131-872-91	CERAMIC CHIP	1000PF	10%	630V		L182	1-500-245-11	FERRITE	0uH			
C191	1-126-206-11	C191	100uF	20%	6.3V								
C192	1-164-156-11	C192	0.1uF		25V		L183	1-216-296-11	SHORT	0			
C193	1-126-206-11	C193	100uF	20%	6.3V		L184	1-216-296-11	SHORT	0			
							< TRANSISTOR >						
C194	1-164-156-11	C194	0.1uF		25V								
C195	1-164-156-11	C195	0.1uF		25V								
C196	1-164-156-11	C196	0.1uF		25V		Q101	8-729-403-35	TRANSISTOR	UN5113-TX			
C1401	1-117-720-11	CERAMIC CHIP	4.7uF		10V		Q121	8-729-403-35	TRANSISTOR	UN5113-TX			
		< CONNECTOR >					Q122	8-729-101-07	TRANSISTOR	2SB798-T1DK			
							Q131	8-729-026-53	TRANSISTOR	2SA1576A-T106-QR			
							Q132	8-729-903-10	TRANSISTOR	FMW1-T-148			
CN101	1-766-833-21	CONNECTOR, FFC/FPC (ZIF) 21P											
CN102	1-784-835-21	CONNECTOR,FFC(LIF(NON-ZIF))27P					Q133	8-729-402-93	TRANSISTOR	UN5214-TX			
CN103	1-784-834-21	CONNECTOR,FFC(LIF(NON-ZIF))23P					Q134	8-729-402-93	TRANSISTOR	UN5214-TX			
* CN104	1-580-055-21	PIN, CONNECTOR (SMD) 2P					Q181	8-729-018-75	TRANSISTOR	2SJ278MYTR			
CN105	1-784-859-21	CONNECTOR, FFC(LIF(NON-ZIF))7P					Q182	8-729-017-65	TRANSISTOR	2SK1764KYTR			
		< DIODE >					< RESISTOR >						
D101	8-719-988-61	DIODE 1SS355TE-17					R101	1-216-829-11	R101	4.7K	5%	1/16W	
D181	8-719-080-81	DIODE FS1J6					R102	1-216-853-11	R102	470K	5%	1/16W	
D183	8-719-080-81	DIODE FS1J6					R103	1-216-863-11	RES-CHIP	3.3M	5%	1/16W	
		< IC >					R104	1-216-853-11	R104	470K	5%	1/16W	
							R105	1-216-825-11	R105	2.2K	5%	1/16W	
IC101	8-752-080-95	IC CXA2523AR					R106	1-216-825-11	R106	2.2K	5%	1/16W	
IC102	8-759-473-51	IC TLV2361CDBV					R107	1-216-825-11	R107	2.2K	5%	1/16W	
IC141	8-759-836-79	IC BH6519FS-E2					R108	1-216-833-11	R108	10K	5%	1/16W	
IC151	8-752-404-64	IC CXD2662R					R109	1-216-845-11	R109	100K	5%	1/16W	
IC153	6-700-052-01	IC MSM51V17400F-50TS-K					R110	1-216-845-11	R110	100K	5%	1/16W	

Ref. No.	Part No.	Description	Remarks			Ref. No.	Part No.	Description	Remarks		
R111	1-216-833-11	R111	10K	5%	1/16W			< SWITCH >			
R112	1-216-829-11	R112	4.7K	5%	1/16W						
R113	1-216-833-11	R113	10K	5%	1/16W	S101	1-762-596-21	SWITCH, PUSH (1 KEY) (LIMIT IN)			
R114	1-216-827-11	R114	3.3K	5%	1/16W	S103	1-771-956-21	SWITCH, PUSH (1 KEY) (OUT)			
R115	1-216-833-11	R115	10K	5%	1/16W	S104	1-771-955-21	SWITCH, PUSH (1 KEY) (PLAY)			
						S105	1-771-955-21	SWITCH, PUSH (1 KEY) (REC)			

R116	1-216-839-11	R116	33K	5%	1/16W	*	A-4591-313-A	FL BOARD, COMPLETE			
R117	1-216-837-11	R117	22K	5%	1/16W			*****			
R118	1-218-855-11	METAL CHIP	2.2K	0.5%	1/10W			< CAPACITOR >			
R119	1-218-863-11	METAL CHIP	4.7K	0.5%	1/10W						
R120	1-218-889-11	METAL CHIP	56K	0.5%	1/10W						
R121	1-218-863-11	METAL CHIP	4.7K	0.5%	1/10W						
R122	1-218-855-11	METAL CHIP	2.2K	0.5%	1/10W	C720	1-124-589-11	ELECT 47uF 20% 16V			
R123	1-216-819-11	R123	680	5%	1/16W	C722	1-124-589-11	ELECT 47uF 20% 16V			
R124	1-216-809-11	R124	100	5%	1/16W	C723	1-164-159-11	CERAMIC 0.1uF 50V			
R125	1-216-815-11	R125	330	5%	1/16W			< CONNECTOR >			
R126	1-216-819-11	R126	680	5%	1/16W	* CN720	1-566-969-11	HOUSING, CONNECTOR(PC BOARD)7P			
R127	1-216-845-11	R127	100K	5%	1/16W	CN721	1-815-144-11	PIN, CONNECTOR 8P (PC BOARD)			
R128	1-219-724-11	METAL CHIP	1	1%	1/4W	CN722	1-779-560-21	CONNECTOR,FFC(LIF(NON-ZIF))23P			
R129	1-216-298-00	R129	2.2	5%	1/10W			< DIODE >			
R130	1-216-829-11	R130	4.7K	5%	1/16W						
R131	1-216-833-11	R131	10K	5%	1/16W	D720	8-719-109-97	DIODE RD6.8ES-T2B2			
R132	1-216-841-11	R132	47K	5%	1/16W	D721	8-719-109-97	DIODE RD6.8ES-T2B2			
R133	1-216-821-11	R133	1K	5%	1/16W			< FLUORESCENT INDICATOR TUBE >			
R134	1-216-821-11	R134	1K	5%	1/16W						
R135	1-216-821-11	R135	1K	5%	1/16W						
R136	1-216-295-91	SHORT	0			FLK720	1-518-714-12	INDICATOR TUBE, FLUORESCENT			
R138	1-216-833-11	R138	10K	5%	1/16W			< RESISTOR >			
R150	1-216-833-11	R150	10K	5%	1/16W						
R151	1-216-833-11	R151	10K	5%	1/16W	R760	1-249-425-11	CARBON 4.7K 5% 1/4W F			
R154	1-216-833-11	R154	10K	5%	1/16W	R761	1-247-843-11	CARBON 3.3K 5% 1/4W			
						R762	1-249-421-11	CARBON 2.2K 5% 1/4W F			
R155	1-216-864-11	R155	0	5%	1/16W	R763	1-249-429-11	CARBON 10K 5% 1/4W			
R156	1-216-864-11	R156	0	5%	1/16W			< SWITCH >			
R157	1-216-809-11	R157	100	5%	1/16W	S720	1-762-875-21	SWITCH, KEYBOARD (VARI SPEED)			
R158	1-216-809-11	R158	100	5%	1/16W	S721	1-762-875-21	SWITCH, KEYBOARD (+)			
R159	1-216-833-11	R159	10K	5%	1/16W	S722	1-762-875-21	SWITCH, KEYBOARD (-)			
						S723	1-762-875-21	SWITCH, KEYBOARD (COAX/UNBAL/BAL)			

R160	1-216-833-11	R160	10K	5%	1/16W	*	A-4591-310-A	HP BOARD, COMPLETE			
R161	1-216-833-11	R161	10K	5%	1/16W			*****			
R163	1-216-809-11	R163	100	5%	1/16W			< CAPACITOR >			
R164	1-216-809-11	R164	100	5%	1/16W						
R165	1-216-809-11	R165	100	5%	1/16W						
R167	1-216-833-11	R167	10K	5%	1/16W	C730	1-162-294-31	CERAMIC 0.001uF 10% 50V			
R168	1-216-845-11	R168	100K	5%	1/16W	C731	1-162-294-31	CERAMIC 0.001uF 10% 50V			
R169	1-216-855-11	R169	680K	5%	1/16W			< CONNECTOR >			
R170	1-216-827-11	R170	3.3K	5%	1/16W						
R171	1-216-821-11	R171	1K	5%	1/16W	CN730	1-564-506-11	PLUG, CONNECTOR 3P			
								< FILTER >			
R173	1-216-821-11	R173	1K	5%	1/16W						
R174	1-216-811-11	R174	150	5%	1/16W	FL730	1-410-397-21	FERRITE BEAD INDUCTOR			
R175	1-216-857-11	R175	1M	5%	1/16W	FL731	1-410-397-21	FERRITE BEAD INDUCTOR			
R176	1-216-809-11	R176	100	5%	1/16W			< JACK >			
R179	1-216-295-91	SHORT	0								
R181	1-216-841-11	R181	47K	5%	1/16W	J730	1-770-904-11	JACK (LARGE TYPE) (PHONES)			
R182	1-216-841-11	R182	47K	5%	1/16W						
R183	1-216-841-11	R183	47K	5%	1/16W						
R184	1-220-942-11	METAL CHIP	3.3	1%	1/4						
R185	1-220-942-11	METAL CHIP	3.3	1%	1/4						
R195	1-216-833-11	R195	10K	5%	1/16W						
R196	1-216-833-11	R196	10K	5%	1/16W						
R197	1-216-833-11	R197	10K	5%	1/16W						
R218	1-216-864-11	R218	0	5%	1/16W						

Ref. No.	Part No.	Description	Remarks			
< RESISTOR >						
R730	1-249-393-11	CARBON	10	5%	1/4W	F
R731	1-249-393-11	CARBON	10	5%	1/4W	F
< VARIABLE RESISTOR >						
RV730	1-225-302-11	RES, VAR, CARBON 1K/1K (PHONE LEVEL)				

*	A-4591-312-A	KEY BOARD, COMPLETE				

< CAPACITOR >						
C701	1-162-294-31	CERAMIC	0.001uF	10%	50V	
C702	1-164-159-11	CERAMIC	0.1uF		50V	
< CONNECTOR >						
CN701	1-794-928-11	PIN, CONNECTOR 7P (PC BOARD)				
< FERRITE BEAD >						
FB701	1-410-397-21	FERRITE BEAD INDUCTOR				
FB702	1-410-397-21	FERRITE BEAD INDUCTOR				
< RESISTOR >						
R701	1-249-429-11	CARBON	10K	5%	1/4W	
R702	1-249-429-11	CARBON	10K	5%	1/4W	
R703	1-249-421-11	CARBON	2.2K	5%	1/4W	F
R704	1-249-421-11	CARBON	2.2K	5%	1/4W	F
R705	1-249-429-11	CARBON	10K	5%	1/4W	
R706	1-247-843-11	CARBON	3.3K	5%	1/4W	
R707	1-247-843-11	CARBON	3.3K	5%	1/4W	
R708	1-249-425-11	CARBON	4.7K	5%	1/4W	F
R709	1-249-421-11	CARBON	2.2K	5%	1/4W	F
R710	1-247-843-11	CARBON	3.3K	5%	1/4W	
R711	1-249-425-11	CARBON	4.7K	5%	1/4W	F
R712	1-249-425-11	CARBON	4.7K	5%	1/4W	F
< SWITCH >						
S700	1-473-779-11	ENCODER, ROTARY (AMS)				
S701	1-762-875-21	SWITCH, KEYBOARD (CLEAR)				
S702	1-762-875-21	SWITCH, KEYBOARD (PLAY/PAUSE)				
S703	1-762-875-21	SWITCH, KEYBOARD (STOP)				
S704	1-762-875-21	SWITCH, KEYBOARD (REC)				
S705	1-762-875-21	SWITCH, KEYBOARD (LEVEL)				
S706	1-762-875-21	SWITCH, KEYBOARD (TIME)				
S707	1-762-875-21	SWITCH, KEYBOARD (LOCATE)				
S708	1-762-875-21	SWITCH, KEYBOARD (AUTO CUE)				
S709	1-762-875-21	SWITCH, KEYBOARD (EDIT/NO)				
S710	1-762-875-21	SWITCH, KEYBOARD (YES)				
S711	1-762-875-21	SWITCH, KEYBOARD (REW)				
S712	1-762-875-21	SWITCH, KEYBOARD (FF)				

*	A-4591-321-A	MAIN BOARD, COMPLETE (J)				
*	A-4591-390-A	MAIN BOARD, COMPLETE (EXCEPT J)				

	7-685-647-79	SCREW +BVTP	3X10 TYPE2 IT-3			
< BATTERY >						
BT100	1-528-887-11	BATTERY, LITHIUM SECONDARY				

Ref. No.	Part No.	Description	Remarks		
< CAPACITOR >					
C102	1-115-339-11	CERAMIC CHIP	0.1uF	10.00%	50V
C103	1-115-339-11	CERAMIC CHIP	0.1uF	10.00%	50V
C104	1-115-339-11	CERAMIC CHIP	0.1uF	10.00%	50V
C105	1-119-932-11	ELECT(BLOCK)	22000uF	20.00%	16V
C107	1-115-339-11	CERAMIC CHIP	0.1uF	10.00%	50V
C108	1-126-767-11	ELECT	1000uF	20.00%	16V
C109	1-115-339-11	CERAMIC CHIP	0.1uF	10.00%	50V
C110	1-104-665-11	ELECT	100uF	20.00%	25V
C111	1-104-665-11	ELECT	100uF	20.00%	25V
C112	1-115-339-11	CERAMIC CHIP	0.1uF	10.00%	50V
C113	1-104-665-11	ELECT	100uF	20.00%	25V
C114	1-126-941-11	ELECT	470uF	20.00%	25V
C115	1-128-555-91	ELECT	470uF	20.00%	63V
C116	1-126-964-11	ELECT	10uF	20.00%	50V
C117	1-126-964-11	ELECT	10uF	20.00%	50V
C118	1-104-665-11	ELECT	100uF	20.00%	25V
C119	1-104-665-11	ELECT	100uF	20.00%	25V
C120	1-126-942-61	ELECT	1000uF	20.00%	25V
C121	1-126-942-61	ELECT	1000uF	20.00%	25V
C124	1-115-339-11	CERAMIC CHIP	0.1uF	10.00%	50V
C125	1-115-339-11	CERAMIC CHIP	0.1uF	10.00%	50V
C126	1-104-665-11	ELECT	100uF	20.00%	10V
C127	1-115-339-11	CERAMIC CHIP	0.1uF	10.00%	50V
C129	1-126-963-11	ELECT	4.7uF	20.00%	50V
C131	1-126-963-11	ELECT	4.7uF	20.00%	50V
C132	1-104-656-11	ELECT	2200uF	20.00%	6.3V
C133	1-126-926-11	ELECT	1000uF	20.00%	10V
C134	1-115-339-11	CERAMIC CHIP	0.1uF	10.00%	50V
C135	1-126-937-11	ELECT	4700uF	20.00%	16V
C136	1-126-933-11	ELECT	100uF	20.00%	16V
C137	1-115-339-11	CERAMIC CHIP	0.1uF	10.00%	50V
C138	1-115-339-11	CERAMIC CHIP	0.1uF	10.00%	50V
C140	1-115-339-11	CERAMIC CHIP	0.1uF	10.00%	50V
C142	1-115-339-11	CERAMIC CHIP	0.1uF	10.00%	50V
C143	1-115-339-11	CERAMIC CHIP	0.1uF	10.00%	50V
C200	1-115-339-11	CERAMIC CHIP	0.1uF	10.00%	50V
C201	1-126-926-11	ELECT	1000uF	20.00%	10V
C202	1-163-222-11	CERAMIC CHIP	5PF	0.25PF	50V
C203	1-163-222-11	CERAMIC CHIP	5PF	0.25PF	50V
C210	1-163-251-11	CERAMIC CHIP	100PF	5.00%	50V
C211	1-163-251-11	CERAMIC CHIP	100PF	5.00%	50V
C212	1-163-251-11	CERAMIC CHIP	100PF	5.00%	50V
C213	1-163-251-11	CERAMIC CHIP	100PF	5.00%	50V
C214	1-163-251-11	CERAMIC CHIP	100PF	5.00%	50V
C215	1-163-251-11	CERAMIC CHIP	100PF	5.00%	50V
C216	1-163-251-11	CERAMIC CHIP	100PF	5.00%	50V
C217	1-115-339-11	CERAMIC CHIP	0.1uF	10.00%	50V
C218	1-126-935-11	ELECT	470uF	20.00%	16V
C219	1-115-339-11	CERAMIC CHIP	0.1uF	10.00%	50V
C220	1-115-339-11	CERAMIC CHIP	0.1uF	10.00%	50V
C221	1-126-935-11	ELECT	470uF	20.00%	16V
C222	1-110-336-51	MYLAR	120PF	5.00%	50V
C223	1-110-336-51	MYLAR	120PF	5.00%	50V
C224	1-130-479-00	MYLAR	0.0047uF	5%	50V
C225	1-130-471-00	MYLAR	0.001uF	5%	50V
C226	1-126-947-11	ELECT	47uF	20.00%	25V
C227	1-130-467-00	MYLAR	470PF	5%	50V
C228	1-110-339-11	MYLAR	220PF	5.00%	50V
C229	1-110-336-51	MYLAR	120PF	5.00%	50V
C230	1-110-336-51	MYLAR	120PF	5.00%	50V

Ref. No.	Part No.	Description	Remarks			Ref. No.	Part No.	Description	Remarks					
C231	1-130-479-00	MYLAR	0.0047uF	5%	50V	C333	1-163-021-91	CERAMIC CHIP	0.01uF	10.00%	50V			
C232	1-130-471-00	MYLAR	0.001uF	5%	50V	C334	1-163-021-91	CERAMIC CHIP	0.01uF	10.00%	50V			
C233	1-126-947-11	ELECT	47uF	20.00%	25V	C340	1-126-916-11	ELECT	1000uF	20.00%	6.3V			
C234	1-130-467-00	MYLAR	470PF	5%	50V	C341	1-115-339-11	CERAMIC CHIP	0.1uF	10.00%	50V			
C235	1-126-947-11	ELECT	47uF	20.00%	25V	C342	1-163-251-11	CERAMIC CHIP	100PF	5.00%	50V			
C236	1-126-947-11	ELECT	47uF	20.00%	25V	C344	1-163-251-11	CERAMIC CHIP	100PF	5.00%	50V			
C237	1-126-934-11	ELECT	220uF	20.00%	16V	C345	1-126-916-11	ELECT	1000uF	20.00%	6.3V			
C238	1-126-934-11	ELECT	220uF	20.00%	16V	C346	1-115-339-11	CERAMIC CHIP	0.1uF	10.00%	50V			
C239	1-128-551-11	ELECT	22uF	20.00%	25V	C348	1-126-916-11	ELECT	1000uF	20.00%	6.3V			
C240	1-128-551-11	ELECT	22uF	20.00%	25V	C349	1-115-339-11	CERAMIC CHIP	0.1uF	10.00%	50V			
C242	1-130-467-00	MYLAR	470PF	5%	50V	C350	1-126-916-11	ELECT	1000uF	20.00%	6.3V			
C243	1-130-467-00	MYLAR	470PF	5%	50V	C351	1-115-339-11	CERAMIC CHIP	0.1uF	10.00%	50V			
C244	1-128-551-11	ELECT	22uF	20.00%	25V	C352	1-126-916-11	ELECT	1000uF	20.00%	6.3V			
C245	1-128-551-11	ELECT	22uF	20.00%	25V	C354	1-115-339-11	CERAMIC CHIP	0.1uF	10.00%	50V			
C246	1-126-947-11	ELECT	47uF	20.00%	25V	C355	1-126-916-11	ELECT	1000uF	20.00%	6.3V			
C247	1-126-947-11	ELECT	47uF	20.00%	25V	C356	1-115-339-11	CERAMIC CHIP	0.1uF	10.00%	50V			
C248	1-119-825-11	ELECT	22uF	20.00%	25V	C357	1-126-916-11	ELECT	1000uF	20.00%	6.3V			
C249	1-119-825-11	ELECT	22uF	20.00%	25V	C358	1-163-009-91	CERAMIC CHIP	0.001uF	10.00%	50V			
						C359	1-163-251-11	CERAMIC CHIP	100PF	5.00%	50V			
C254	1-115-339-11	CERAMIC CHIP	0.1uF	10.00%	50V	C360	1-126-916-11	ELECT	1000uF	20.00%	6.3V			
C255	1-104-665-11	ELECT	100uF	20.00%	25V	C361	1-115-339-11	CERAMIC CHIP	0.1uF	10.00%	50V			
C256	1-115-339-11	CERAMIC CHIP	0.1uF	10.00%	50V	C633	1-110-339-11	MYLAR	220PF	5.00%	50V			
C257	1-130-475-00	MYLAR	0.0022uF	5%	50V	C904	1-115-339-11	CERAMIC CHIP	0.1uF	10.00%	50V			
C258	1-130-475-00	MYLAR	0.0022uF	5%	50V	C905	1-126-935-11	ELECT	470uF	20.00%	10V			
C259	1-126-935-11	ELECT	470uF	20.00%	16V	C906	1-126-935-11	ELECT	470uF	20.00%	10V			
C260	1-115-339-11	CERAMIC CHIP	0.1uF	10.00%	50V	C907	1-115-339-11	CERAMIC CHIP	0.1uF	10.00%	50V			
C261	1-163-021-91	CERAMIC CHIP	0.01uF	10.00%	50V	C908	1-126-963-11	ELECT	4.7uF	20.00%	50V			
						C909	1-163-021-91	CERAMIC CHIP	0.01uF	10.00%	50V			
						C910	1-115-339-11	CERAMIC CHIP	0.1uF	10.00%	50V			
						C911	1-163-251-11	CERAMIC CHIP	100PF	5.00%	50V			
						C912	1-115-339-11	CERAMIC CHIP	0.1uF	10.00%	50V			
C262	1-128-551-11	ELECT	22uF	20.00%	25V	C913	1-163-251-11	CERAMIC CHIP	100PF	5.00%	50V			
C263	1-128-551-11	ELECT	22uF	20.00%	25V	C914	1-115-339-11	CERAMIC CHIP	0.1uF	10.00%	50V			
C264	1-107-048-00	MICA	6.8PF		500V	C915	1-163-243-11	CERAMIC CHIP	47PF	5.00%	50V			
C265	1-107-048-00	MICA	6.8PF		500V	C916	1-163-251-11	CERAMIC CHIP	100PF	5.00%	50V			
C266	1-126-947-11	ELECT	47uF	20.00%	25V	C917	1-115-339-11	CERAMIC CHIP	0.1uF	10.00%	50V			
C267	1-126-947-11	ELECT	47uF	20.00%	25V	C918	1-163-251-11	CERAMIC CHIP	100PF	5.00%	50V			
C303	1-115-339-11	CERAMIC CHIP	0.1uF	10.00%	50V	C919	1-163-251-11	CERAMIC CHIP	100PF	5.00%	50V			
C304	1-136-177-00	MYLAR	1uF	5.00%	50V	C920	1-126-935-11	ELECT	470uF	20.00%	10V			
C305	1-104-665-11	ELECT	100uF	20.00%	10V	C921	1-115-339-11	CERAMIC CHIP	0.1uF	10.00%	50V			
C306	1-115-339-11	CERAMIC CHIP	0.1uF	10.00%	50V	C924	1-126-933-11	ELECT	100uF	20.00%	16V			
C307	1-104-665-11	ELECT	100uF	20.00%	10V	C926	1-115-339-11	CERAMIC CHIP	0.1uF	10.00%	50V			
C308	1-115-339-11	CERAMIC CHIP	0.1uF	10.00%	50V	C927	1-115-339-11	CERAMIC CHIP	0.1uF	10.00%	50V			
C309	1-115-339-11	CERAMIC CHIP	0.1uF	10.00%	50V	*	CN101	1-779-291-11	CONNECTOR,FFC(LIF(NON-ZIF))23P					
C310	1-126-964-11	ELECT	10uF	20.00%	50V							CN200	1-779-291-11	CONNECTOR,FFC(LIF(NON-ZIF))23P
C311	1-104-665-11	ELECT	100uF	20.00%	10V							CN302	1-564-511-11	PLUG, CONNECTOR 8P
C312	1-115-339-11	CERAMIC CHIP	0.1uF	10.00%	50V							CN303	1-779-295-11	CONNECTOR,FFC(LIF(NON-ZIF))27P
C317	1-104-665-11	ELECT	100uF	20.00%	10V									
C318	1-115-339-11	CERAMIC CHIP	0.1uF	10.00%	50V				< CONNECTOR >					
C319	1-163-021-91	CERAMIC CHIP	0.01uF	10.00%	50V									
C320	1-163-021-91	CERAMIC CHIP	0.01uF	10.00%	50V									
C321	1-163-021-91	CERAMIC CHIP	0.01uF	10.00%	50V									
C322	1-163-021-91	CERAMIC CHIP	0.01uF	10.00%	50V									
C323	1-163-021-91	CERAMIC CHIP	0.01uF	10.00%	50V									
C324	1-115-339-11	CERAMIC CHIP	0.1uF	10.00%	50V									
C325	1-104-665-11	ELECT	100uF	20.00%	10V									
C327	1-163-021-91	CERAMIC CHIP	0.01uF	10.00%	50V									
C328	1-163-021-91	CERAMIC CHIP	0.01uF	10.00%	50V									
C331	1-104-665-11	ELECT	100uF	20.00%	10V									
C332	1-115-339-11	CERAMIC CHIP	0.1uF	10.00%	50V									

MAIN

Ref. No.	Part No.	Description	Remarks	Ref. No.	Part No.	Description	Remarks
D105	8-719-046-10	DIODE EC11FS2-TE12L		FB106	1-410-397-21	FERRITE BEAD INDUCTOR	
D106	8-719-046-10	DIODE EC11FS2-TE12L		FB107	1-410-397-21	FERRITE BEAD INDUCTOR	
D107	8-719-046-10	DIODE EC11FS2-TE12L		FB108	1-410-397-21	FERRITE BEAD INDUCTOR	
D108	8-719-210-39	DIODE EC10QS04-TE12L5		FB109	1-410-397-21	FERRITE BEAD INDUCTOR	
D109	8-719-210-39	DIODE EC10QS04-TE12L5		FB110	1-410-397-21	FERRITE BEAD INDUCTOR	
D110	8-719-046-10	DIODE EC11FS2-TE12L		FB111	1-410-397-21	FERRITE BEAD INDUCTOR	
D113	8-719-801-78	DIODE 1SS184-TE85L		FB115	1-410-397-21	FERRITE BEAD INDUCTOR	
D116	8-719-801-78	DIODE 1SS184-TE85L		FB200	1-410-397-21	FERRITE BEAD INDUCTOR	
D118	8-719-801-78	DIODE 1SS184-TE85L		FB201	1-410-397-21	FERRITE BEAD INDUCTOR (EXCEPT J)	
D119	8-719-801-78	DIODE 1SS184-TE85L		FB202	1-410-397-21	FERRITE BEAD INDUCTOR (EXCEPT J)	
D120	8-719-017-79	DIODE MA8033-TX		FB203	1-410-397-21	FERRITE BEAD INDUCTOR (EXCEPT J)	
D121	8-719-801-78	DIODE 1SS184-TE85L		FB204	1-410-397-21	FERRITE BEAD INDUCTOR (EXCEPT J)	
D122	8-719-801-78	DIODE 1SS184-TE85L		FB210	1-410-397-21	FERRITE BEAD INDUCTOR	
D123	8-719-801-78	DIODE 1SS184-TE85L		FB211	1-410-397-21	FERRITE BEAD INDUCTOR	
D124	8-719-801-78	DIODE 1SS184-TE85L		FB212	1-410-397-21	FERRITE BEAD INDUCTOR	
D125	8-719-977-28	DIODE UdzSTE-1710B		FB213	1-410-397-21	FERRITE BEAD INDUCTOR	
D126	8-719-801-78	DIODE 1SS184-TE85L		FB300	1-410-397-21	FERRITE BEAD INDUCTOR	
D127	8-719-801-78	DIODE 1SS184-TE85L		FB301	1-410-397-21	FERRITE BEAD INDUCTOR	
D200	8-719-986-56	DIODE HZS24-3LTA		FB302	1-410-397-21	FERRITE BEAD INDUCTOR	
D201	8-719-986-56	DIODE HZS24-3LTA		FB303	1-410-397-21	FERRITE BEAD INDUCTOR	
D202	8-719-986-56	DIODE HZS24-3LTA		FB304	1-410-397-21	FERRITE BEAD INDUCTOR	
D203	8-719-986-56	DIODE HZS24-3LTA		FB900	1-410-397-21	FERRITE BEAD INDUCTOR	
D204	8-719-986-56	DIODE HZS24-3LTA		FB902	1-410-397-21	FERRITE BEAD INDUCTOR	
D205	8-719-986-56	DIODE HZS24-3LTA		FB904	1-410-397-21	FERRITE BEAD INDUCTOR	
D206	8-719-986-56	DIODE HZS24-3LTA		FB905	1-410-397-21	FERRITE BEAD INDUCTOR	
D207	8-719-986-56	DIODE HZS24-3LTA		FB906	1-410-397-21	FERRITE BEAD INDUCTOR	
D208	8-719-800-76	DIODE 1SS226-TE85L		FB907	1-410-397-21	FERRITE BEAD INDUCTOR	
D209	8-719-800-76	DIODE 1SS226-TE85L		FB908	1-410-397-21	FERRITE BEAD INDUCTOR	
D212	8-719-801-78	DIODE 1SS184-TE85L		FB909	1-410-397-21	FERRITE BEAD INDUCTOR	
D213	8-719-801-78	DIODE 1SS184-TE85L					
D214	8-719-210-39	DIODE EC10QS04-TE12L5				< IC >	
D215	8-719-210-39	DIODE EC10QS04-TE12L5		IC100	8-759-604-35	IC M5F78M05L	
D217	8-719-801-78	DIODE 1SS184-TE85L		IC101	8-759-708-08	IC NJM78L08A-T3	
D303	8-719-801-78	DIODE 1SS184-TE85L		IC102	8-759-700-67	IC NJM79L08A-T3	
D900	8-719-109-97	DIODE RD6.8ES-T2B2		IC103	8-759-525-48	IC LA5632	
D901	8-719-109-97	DIODE RD6.8ES-T2B2		IC104	8-759-822-09	IC LB1641 (-11, -12)	
D902	8-719-109-97	DIODE RD6.8ES-T2B2		IC104	8-759-913-06	IC BA6209 (-13)	
D903	8-719-109-97	DIODE RD6.8ES-T2B2		IC105	8-759-708-05	IC NJM78L05A-T1	
D904	8-719-017-79	DIODE MA8033-TX		IC200	8-759-927-29	IC SN74HCU04ANS-E05	
D905	8-719-109-97	DIODE RD6.8ES-T2B2		IC210	8-759-700-94	IC NJM5532M (TE2) (UC, GC)	
D906	8-719-109-97	DIODE RD6.8ES-T2B2		IC210	8-759-711-82	IC NJM4580E (T1) (J, 1UC, 1GC)	
D907	8-719-109-97	DIODE RD6.8ES-T2B2		IC212	8-759-700-94	IC NJM5532M (TE2) (UC, GC)	
D908	8-719-986-56	DIODE HZS24-3LTA		IC212	8-759-711-82	IC NJM4580E (T1) (J, 1UC, 1GC)	
		< TERMINAL >		IC213	8-759-711-82	IC NJM4580E (T1)	
EP100	1-537-770-21	TERMINAL BOARD, GROUND		IC214	8-759-579-68	IC AK4524-TP	
EP101	1-537-770-21	TERMINAL BOARD, GROUND		IC215	8-759-700-94	IC NJM5532M (TE2) (UC, GC)	
		< IC LINK >		IC215	8-759-711-82	IC NJM4580E (T1) (J, 1UC, 1GC)	
△ F101	1-576-122-21	LINK, IC (10uH)		IC216	8-759-700-94	IC NJM5532M (TE2) (UC, GC)	
		< FERRITE BEAD >		IC216	8-759-711-82	IC NJM4580E (T1) (J, 1UC, 1GC)	
FB100	1-410-397-21	FERRITE BEAD INDUCTOR		IC300	6-800-658-01	IC uPD703033AYGF-M29-3BA	
FB101	1-410-397-21	FERRITE BEAD INDUCTOR		IC302	8-759-699-68	IC PST592D-T	
FB102	1-410-397-21	FERRITE BEAD INDUCTOR					
FB103	1-410-397-21	FERRITE BEAD INDUCTOR					
FB105	1-410-397-21	FERRITE BEAD INDUCTOR					

△印の部品 ,または △印付きの点線で囲まれた部品は ,
安全性を維持するために重要な部品です。
従って交換時は ,必ず指定の部品を使用して下さい。

The components identified by
mark △ or dotted line with mark
△ are critical for safety.
Replace only with part number
specified.

Les composants identifiés par
une marque △ sont critiques
pour la sécurité.
Ne les remplacer que par une
pièce portant le numéro spécifié.

Ref. No.	Part No.	Description	Remarks	Ref. No.	Part No.	Description	Remarks
IC303	8-759-431-99	IC BR9020F-E2		R117	1-208-518-61	RES-CHIP 22K	2% 1/10W
IC310	6-800-627-01	IC M30805MG-217GP		R118	1-208-462-61	RES-CHIP 10K	2% 1/10W
IC311	6-800-563-01	IC MT28F800B3WG-E12/1 (UC,GC)		R200	1-216-295-91	SHORT 0	
IC900	8-749-012-69	IC GP1F38T		R201	1-216-665-11	METAL CHIP 3.9K	0.5% 1/10W
IC901	8-749-012-70	IC GP1F38R		R202	1-208-365-61	RES-CHIP 100	2% 1/10W (EXCEPT J)
IC904	8-759-927-29	IC SN74HCU04ANS-E05		R202	1-216-295-91	SHORT 0	(J)
		< JACK >		R211	1-208-365-61	RES-CHIP 100	2% 1/10W
J201	1-784-429-11	JACK, PIN 4P (ANALOG(UNBALANCE))		R212	1-208-365-61	RES-CHIP 100	2% 1/10W
J901	1-794-927-11	JACK, PIN 2P (DIGITAL COAXIAL)		R213	1-208-365-61	RES-CHIP 100	2% 1/10W
J902	1-764-188-21	JACK (SMALL TYPE) (DIA. 3.5) (CTRL-S)		R220	1-208-462-61	RES-CHIP 10K	2% 1/10W
		< JUMPER RESISTOR >		R221	1-208-462-61	RES-CHIP 10K	2% 1/10W
JW301	1-216-295-91	SHORT 0		R222	1-208-462-61	RES-CHIP 10K	2% 1/10W
JW302	1-208-437-61	RES-CHIP 1K	2% 1/10W (J)	R223	1-208-462-61	RES-CHIP 10K	2% 1/10W
JW303	1-208-526-61	RES-CHIP 47K	2% 1/10W	R224	1-208-518-61	RES-CHIP 22K	2% 1/10W
JW304	1-216-295-91	SHORT 0 (J)		R225	1-208-518-61	RES-CHIP 22K	2% 1/10W
JW305	1-216-295-91	SHORT 0 (EXCEPT J)		R226	1-208-441-61	RES-CHIP 1.5K	2% 1/10W
JW307	1-216-295-91	SHORT 0		R227	1-208-441-61	RES-CHIP 1.5K	2% 1/10W
JW311	1-216-295-91	SHORT 0 (UC, GC)		R228	1-216-647-11	METAL CHIP 680	0.5% 1/10W
		< TRANSISTOR >		R229	1-208-462-61	RES-CHIP 10K	2% 1/10W
Q100	8-729-143-49	TRANSISTOR 2SD1312-LKU-TP		R230	1-208-437-61	RES-CHIP 1K	2% 1/10W
Q101	8-729-119-76	TRANSISTOR 2SA1115TP-EF		R231	1-208-425-61	RES-CHIP 330	2% 1/10W
Q102	8-729-421-22	TRANSISTOR UN2211-TX		R232	1-208-462-61	RES-CHIP 10K	2% 1/10W
Q103	8-729-424-08	TRANSISTOR UN2111-TX		R233	1-208-462-61	RES-CHIP 10K	2% 1/10W
Q104	8-729-424-08	TRANSISTOR UN2111-TX		R234	1-208-462-61	RES-CHIP 10K	2% 1/10W
Q105	8-729-421-22	TRANSISTOR UN2211-TX		R235	1-208-462-61	RES-CHIP 10K	2% 1/10W
Q106	8-729-016-19	TRANSISTOR 2SC3757-TX		R236	1-208-518-61	RES-CHIP 22K	2% 1/10W
Q107	8-729-424-08	TRANSISTOR UN2111-TX		R237	1-208-518-61	RES-CHIP 22K	2% 1/10W
Q210	8-729-141-73	TRANSISTOR 2SD1938(F)-S(TX).SO		R238	1-208-441-61	RES-CHIP 1.5K	2% 1/10W
Q211	8-729-141-73	TRANSISTOR 2SD1938(F)-S(TX).SO		R239	1-208-441-61	RES-CHIP 1.5K	2% 1/10W
Q213	8-729-141-73	TRANSISTOR 2SD1938(F)-S(TX).SO		R240	1-216-647-11	METAL CHIP 680	0.5% 1/10W
Q214	8-729-141-73	TRANSISTOR 2SD1938(F)-S(TX).SO		R241	1-208-462-61	RES-CHIP 10K	2% 1/10W
Q215	8-729-141-73	TRANSISTOR 2SD1938(F)-S(TX).SO		R242	1-208-437-61	RES-CHIP 1K	2% 1/10W
Q216	8-729-141-73	TRANSISTOR 2SD1938(F)-S(TX).SO		R243	1-208-425-61	RES-CHIP 330	2% 1/10W
Q900	8-729-016-19	TRANSISTOR 2SC3757-TX		R244	1-216-699-11	METAL CHIP 100K	0.5% 1/10W
Q901	8-729-016-19	TRANSISTOR 2SC3757-TX		R247	1-216-699-11	METAL CHIP 100K	0.5% 1/10W
		< RESISTOR >		R248	1-216-699-11	METAL CHIP 100K	0.5% 1/10W
R50	1-216-375-81	METAL OXIDE 3.3	5% 2W	R249	1-208-365-61	RES-CHIP 100	2% 1/10W
R100	1-208-365-61	RES-CHIP 100	2% 1/10W	R250	1-208-365-61	RES-CHIP 100	2% 1/10W
R101	1-208-437-61	RES-CHIP 1K	2% 1/10W	R251	1-208-522-61	RES-CHIP 33K	2% 1/10W
R102	1-208-437-61	RES-CHIP 1K	2% 1/10W	R252	1-208-810-11	RES-CHIP 15K	2% 1/10W
R103	1-208-800-11	RES-CHIP 5.6K	2% 1/10W	R253	1-208-810-11	RES-CHIP 15K	2% 1/10W
R104	1-208-784-11	RES-CHIP 1.2K	2% 1/10W	R254	1-208-522-61	RES-CHIP 33K	2% 1/10W
R105	1-208-425-61	RES-CHIP 330	2% 1/10W	R255	1-208-526-61	RES-CHIP 47K	2% 1/10W
R106	1-208-462-61	RES-CHIP 10K	2% 1/10W	R256	1-208-526-61	RES-CHIP 47K	2% 1/10W
R107	1-208-462-61	RES-CHIP 10K	2% 1/10W	R262	1-208-365-61	RES-CHIP 100	2% 1/10W
R108	1-216-623-11	METAL CHIP 68	0.5% 1/10W	R263	1-208-365-61	RES-CHIP 100	2% 1/10W
R109	1-208-462-61	RES-CHIP 10K	2% 1/10W	R264	1-208-774-11	RES-CHIP 470	2% 1/10W
R110	1-208-462-61	RES-CHIP 10K	2% 1/10W	R265	1-208-774-11	RES-CHIP 470	2% 1/10W
R111	1-216-659-11	METAL CHIP 2.2K	0.5% 1/10W	R266	1-208-437-61	RES-CHIP 1K	2% 1/10W
R115	1-208-518-61	RES-CHIP 22K	2% 1/10W	R267	1-216-295-91	SHORT 0	
R116	1-208-462-61	RES-CHIP 10K	2% 1/10W	R268	1-208-558-61	RES-CHIP 1M	2% 1/10W
				R269	1-208-558-61	RES-CHIP 1M	2% 1/10W
				R270	1-208-437-61	RES-CHIP 1K	2% 1/10W
				R271	1-208-437-61	RES-CHIP 1K	2% 1/10W
				R272	1-216-671-11	METAL CHIP 6.8K	0.5% 1/10W
				R273	1-216-689-11	METAL CHIP 39K	0.5% 1/10W
				R273	1-216-689-11	METAL CHIP 39K	0.5% 1/10W
				R274	1-208-437-61	RES-CHIP 1K	2% 1/10W
				R275	1-216-671-11	METAL CHIP 6.8K	0.5% 1/10W
				R276	1-216-689-11	METAL CHIP 39K	0.5% 1/10W

MAIN

Ref. No.	Part No.	Description			Remarks
R276	1-216-689-11	METAL CHIP	39K	0.5%	1/10W
R277	1-208-437-61	RES-CHIP	1K	2%	1/10W
R278	1-215-882-81	METAL OXIDE	22	5%	2W
R279	1-216-295-91	SHORT	0		
R280	1-216-295-91	SHORT	0		
R281	1-208-437-61	RES-CHIP	1K	2%	1/10W
R282	1-216-699-11	METAL CHIP	100K	0.5%	1/10W
R283	1-216-619-11	METAL CHIP	47	0.5%	1/10W
R284	1-216-619-11	METAL CHIP	47	0.5%	1/10W
R285	1-216-295-91	SHORT	0		
R286	1-216-295-91	SHORT	0		
R287	1-208-462-61	RES-CHIP	10K	2%	1/10W
R288	1-208-462-61	RES-CHIP	10K	2%	1/10W
R295	1-216-295-91	SHORT	0		
R296	1-216-295-91	SHORT	0		
R301	1-216-611-11	METAL CHIP	22	0.5%	1/10W
R303	1-208-462-61	RES-CHIP	10K	2%	1/10W
R304	1-208-462-61	RES-CHIP	10K	2%	1/10W
R305	1-208-462-61	RES-CHIP	10K	2%	1/10W
R306	1-208-462-61	RES-CHIP	10K	2%	1/10W
R307	1-208-462-61	RES-CHIP	10K	2%	1/10W
R308	1-208-462-61	RES-CHIP	10K	2%	1/10W
R309	1-208-462-61	RES-CHIP	10K	2%	1/10W
R310	1-208-462-61	RES-CHIP	10K	2%	1/10W
R311	1-208-462-61	RES-CHIP	10K	2%	1/10W
R335	1-208-462-61	RES-CHIP	10K	2%	1/10W
R336	1-208-462-61	RES-CHIP	10K	2%	1/10W
R340	1-216-295-91	SHORT	0		
R341	1-216-295-91	SHORT	0		
R342	1-208-462-61	RES-CHIP	10K	2%	1/10W
R343	1-216-295-91	SHORT	0		
R344	1-208-462-61	RES-CHIP	10K	2%	1/10W
R345	1-208-462-61	RES-CHIP	10K	2%	1/10W
R346	1-216-295-91	SHORT	0		
R347	1-208-462-61	RES-CHIP	10K	2%	1/10W
R348	1-208-462-61	RES-CHIP	10K	2%	1/10W
R350	1-208-462-61	RES-CHIP	10K	2%	1/10W
R354	1-208-462-61	RES-CHIP	10K	2%	1/10W
R355	1-208-462-61	RES-CHIP	10K	2%	1/10W
R356	1-208-462-61	RES-CHIP	10K	2%	1/10W
R357	1-208-462-61	RES-CHIP	10K	2%	1/10W
R362	1-216-699-11	METAL CHIP	100K	0.5%	1/10W
R364	1-216-699-11	METAL CHIP	100K	0.5%	1/10W
R365	1-216-699-11	METAL CHIP	100K	0.5%	1/10W
R366	1-208-462-61	RES-CHIP	10K	2%	1/10W
R369	1-208-462-61	RES-CHIP	10K	2%	1/10W
R370	1-208-462-61	RES-CHIP	10K	2%	1/10W
R373	1-216-699-11	METAL CHIP	100K	0.5%	1/10W
R375	1-208-462-61	RES-CHIP	10K	2%	1/10W
R377	1-208-462-61	RES-CHIP	10K	2%	1/10W
R378	1-208-462-61	RES-CHIP	10K	2%	1/10W
R379	1-208-462-61	RES-CHIP	10K	2%	1/10W
R380	1-208-462-61	RES-CHIP	10K	2%	1/10W
R381	1-208-462-61	RES-CHIP	10K	2%	1/10W
R382	1-208-462-61	RES-CHIP	10K	2%	1/10W
R383	1-208-462-61	RES-CHIP	10K	2%	1/10W
R384	1-208-462-61	RES-CHIP	10K	2%	1/10W
R396	1-208-462-61	RES-CHIP	10K	2%	1/10W
R397	1-208-462-61	RES-CHIP	10K	2%	1/10W
R399	1-208-462-61	RES-CHIP	10K	2%	1/10W

Ref. No.	Part No.	Description			Remarks
R404	1-208-462-61	RES-CHIP	10K	2%	1/10W (UC,GC)
R405	1-208-462-61	RES-CHIP	10K	2%	1/10W (UC,GC)
R406	1-208-462-61	RES-CHIP	10K	2%	1/10W (UC,GC)
R407	1-208-462-61	RES-CHIP	10K	2%	1/10W (UC,GC)
R408	1-208-462-61	RES-CHIP	10K	2%	1/10W (UC,GC)
R409	1-208-462-61	RES-CHIP	10K	2%	1/10W (UC,GC)
R410	1-208-462-61	RES-CHIP	10K	2%	1/10W (UC,GC)
R411	1-208-462-61	RES-CHIP	10K	2%	1/10W (UC,GC)
R412	1-208-462-61	RES-CHIP	10K	2%	1/10W (UC,GC)
R413	1-208-462-61	RES-CHIP	10K	2%	1/10W (UC,GC)
R414	1-208-462-61	RES-CHIP	10K	2%	1/10W (UC,GC)
R415	1-208-462-61	RES-CHIP	10K	2%	1/10W (UC,GC)
R416	1-208-462-61	RES-CHIP	10K	2%	1/10W (UC,GC)
R417	1-208-462-61	RES-CHIP	10K	2%	1/10W (UC,GC)
R418	1-208-462-61	RES-CHIP	10K	2%	1/10W (UC,GC)
R419	1-208-462-61	RES-CHIP	10K	2%	1/10W (UC,GC)
R420	1-208-462-61	RES-CHIP	10K	2%	1/10W
R421	1-216-295-91	SHORT	0		(UC,GC)
R422	1-208-462-61	RES-CHIP	10K	2%	1/10W
R426	1-216-295-91	SHORT	0		
R427	1-216-295-91	SHORT	0		
R433	1-216-295-91	SHORT	0		(J,1UC,1GC)
R434	1-216-295-91	SHORT	0		(J,UC,GC)
R435	1-208-462-61	RES-CHIP	10K	2%	1/10W (1UC,1GC)
R436	1-216-295-91	SHORT	0		
R437	1-216-295-91	SHORT	0		
R900	1-208-550-61	RES-CHIP	470K	2%	1/10W
R901	1-208-365-61	RES-CHIP	100	2%	1/10W
R902	1-208-755-11	RES-CHIP	75	2%	1/10W
R903	1-208-755-11	RES-CHIP	75	2%	1/10W
R904	1-208-437-61	RES-CHIP	1K	2%	1/10W
R905	1-208-365-61	RES-CHIP	100	2%	1/10W
R906	1-208-437-61	RES-CHIP	1K	2%	1/10W
R907	1-208-526-61	RES-CHIP	47K	2%	1/10W
R908	1-208-526-61	RES-CHIP	47K	2%	1/10W
R909	1-208-462-61	RES-CHIP	10K	2%	1/10W
R910	1-208-365-61	RES-CHIP	100	2%	1/10W
R911	1-208-462-61	RES-CHIP	10K	2%	1/10W
R912	1-208-365-61	RES-CHIP	100	2%	1/10W
R913	1-216-699-11	METAL CHIP	100K	0.5%	1/10W
R914	1-208-526-61	RES-CHIP	47K	2%	1/10W
R915	1-208-437-61	RES-CHIP	1K	2%	1/10W
R917	1-208-526-61	RES-CHIP	47K	2%	1/10W
R918	1-208-526-61	RES-CHIP	47K	2%	1/10W
R920	1-208-550-61	RES-CHIP	470K	2%	1/10W

Ref. No.	Part No.	Description	Remarks	Ref. No.	Part No.	Description	Remarks
		< VARIABLE RESISTOR >				< JACK >	
RV200	1-227-246-11	RES, VAR, CARBON 20K		J750	1-815-139-11	CONNECTOR, ROUND TYPE 6P (KEY BOARD)	
		< TRANSFORMER >				< RESISTOR >	
T901	1-416-701-11	COIL (WITH CORE)		R750	1-247-807-31	CARBON 100 5% 1/4W	
		< THERMISTOR(POSITIVE) >		R751	1-249-401-11	CARBON 47 5% 1/4W	F
THP200	1-801-671-11	THERMISTOR, POSITIVE		R752	1-247-807-31	CARBON 100 5% 1/4W	
THP201	1-801-671-11	THERMISTOR, POSITIVE		R753	1-247-807-31	CARBON 100 5% 1/4W	F
		< VIBRATOR >		R754	1-249-421-11	CARBON 2.2K 5% 1/4W	F
X200	1-760-955-11	VIBRATOR, CRYSTAL (45.158MHz)				< SWITCH >	
X330	1-781-174-21	VIBRATOR, CERAMIC (10MHz)		S750	1-771-122-11	SWITCH, SLIDE (EJECT)	
XF300	1-760-014-11	VIBRATOR, CERAMIC (20MHz)				*****	
		*****				MISCELLANEOUS	
		*****				*****	
*	A-4591-309-A	PSW BOARD, COMPLETE		24	1-757-252-11	WIRE, FLAT TYPE (23 CORE)	
		*****		31	1-500-422-11	BEAD, FERRITE (UC, 1UC, 1GC)	
	1-533-233-11	HOLDER, FUSE		33	1-543-830-11	CLAMP, SLEEVE FERRITE (EXCEPT J)	
		< CAPACITOR >		34	1-543-798-11	FILTER, CLAMP (FERRITE CORE) (1UC, 1GC)	
△ C901	1-117-703-11	CERAMIC 0.0047uF 99% 250V		59	1-757-254-12	WIRE, FLAT TYPE (27 CORE)	
		< CONNECTOR >		60	1-757-253-12	WIRE, FLAT TYPE (23 CORE)	
CN901	1-564-321-00	PIN, CONNECTOR 2P		△ 63	1-751-275-11	CORD, POWER (GC, 1GC)	
		< FUSE >		△ 63	1-783-531-41	CORD, POWER (UC)	
△ F901	1-532-463-51	FUSE (T1AL/250V) (GC, 1GC)		△ 63	1-790-345-21	CORD, POWER (J)	
△ F901	1-576-100-11	FUSE (1A/250V) (EXCEPT GC, 1GC)		△ 63	1-792-149-12	CORD, POWER (1UC)	
		*****		△ PT1	1-435-758-11	TRANSFORMER, POWER (EXCEPT 1GC))	
		*****		△ PT1	1-435-758-21	TRANSFORMER, POWER (1GC)	
		*****				*****	
		*****				ACCESSORIES & PACKING MATERIALS	
		*****				*****	
*	A-4591-311-A	SIRCS BOARD, COMPLETE (J)		1-476-335-11	REMOTE COMMANDER (RM-DR1J) (J)		
*	A-4591-359-A	SIRCS BOARD, COMPLETE (EXCEPT J)		1-476-336-11	REMOTE COMMANDER (RM-DR1E) (EXCEPT J)		
		*****		△	1-569-008-21	ADAPTOR, CONVERSION 2P (GC,1GC)	
		< CAPACITOR >			1-791-953-12	CORD, CONNECTION	
C751	1-124-589-11	ELECT 47uF 20% 16V			2-347-256-03	MANUAL, INSTRUCTION (JAPANESE) (J)	
		< CONNECTOR >			2-347-256-12	MANUAL, INSTRUCTION (ENGLISH) (UC,GC)	
		< DIODE >			2-347-256-21	MANUAL, INSTRUCTION (ENGLISH) (1UC,1GC)	
		< FERRITE BEAD >				*****	
D750	8-719-108-12	DIODE RD9.1EW-T2				HARDWARE LIST	
D751	8-719-108-12	DIODE RD9.1EW-T2		#1	7-685-870-09	SCREW +BVTT 3X5 (S)	
D752	8-719-108-12	DIODE RD9.1EW-T2		#2	7-685-872-09	SCREW +BVTT 3X8 (S)	
D753	8-719-108-12	DIODE RD9.1EW-T2		#3	7-685-647-79	SCREW +BVTT 3X10 TYPE2 IT-3	
		< FERRITE BEAD >		#4	7-682-546-04	SCREW +PTT 3X5 (S)	
		< FILTER >		#5	7-685-133-19	SCREW (DIA. 2.6) (IT3B)	
FB751	1-410-397-21	FERRITE BEAD INDUCTOR		#6	7-685-873-01	SCREW +BVTT 3X10 (1UC)	
		< IC >		#7	7-623-208-22	SW3, TYPE2 (1UC)	
FL750	1-236-130-11	FILTER, LOW PASS (EXCEPT J)					
FL751	1-236-130-11	FILTER, LOW PASS (EXCEPT J)					
		< IC >					
IC750	8-749-011-22	IC GP1U27X					

△印の部品 ,または △印付きの点線で囲まれた部品は ,
安全性を維持するために重要な部品です。
従って交換時は , 必ず指定の部品を使用して下さい。

The components identified by
mark △ or dotted line with mark
△ are critical for safety.
Replace only with part number
specified.

Les composants identifiés par
une marque △ sont critiques
pour la sécurité.
Ne les remplacer que par une
pièce portant le numéro spécifié.

